

THE WINSLOW

The Winslow is a 2-story home featuring an expansive open concept floor plan with a lofted second floor, spacious bedrooms and a large master suite. This plan has a number of flexible options to choose from including a powder room, alternate layouts, luxury master suite, and more.

DETAILS:

2 Story

3 Bedrooms, Plus Loft

2.5 Baths

2,168 Square Feet

2 Car Garage

Want to create your dream home virtually? Click on our Interactive Design Tool tab at fandfhomes.com

The elevations on this brochure are an artist's conception and may vary slightly from actual construction. Cupolas, dormers, and other exterior detailing are optional. Please be sure to review actual blueprints with Community Sales Manager for specific plan and elevation details.

Manor Collection

ELEVATION I



ELEVATION II



ELEVATION III



ELEVATION VI



ELEVATION V



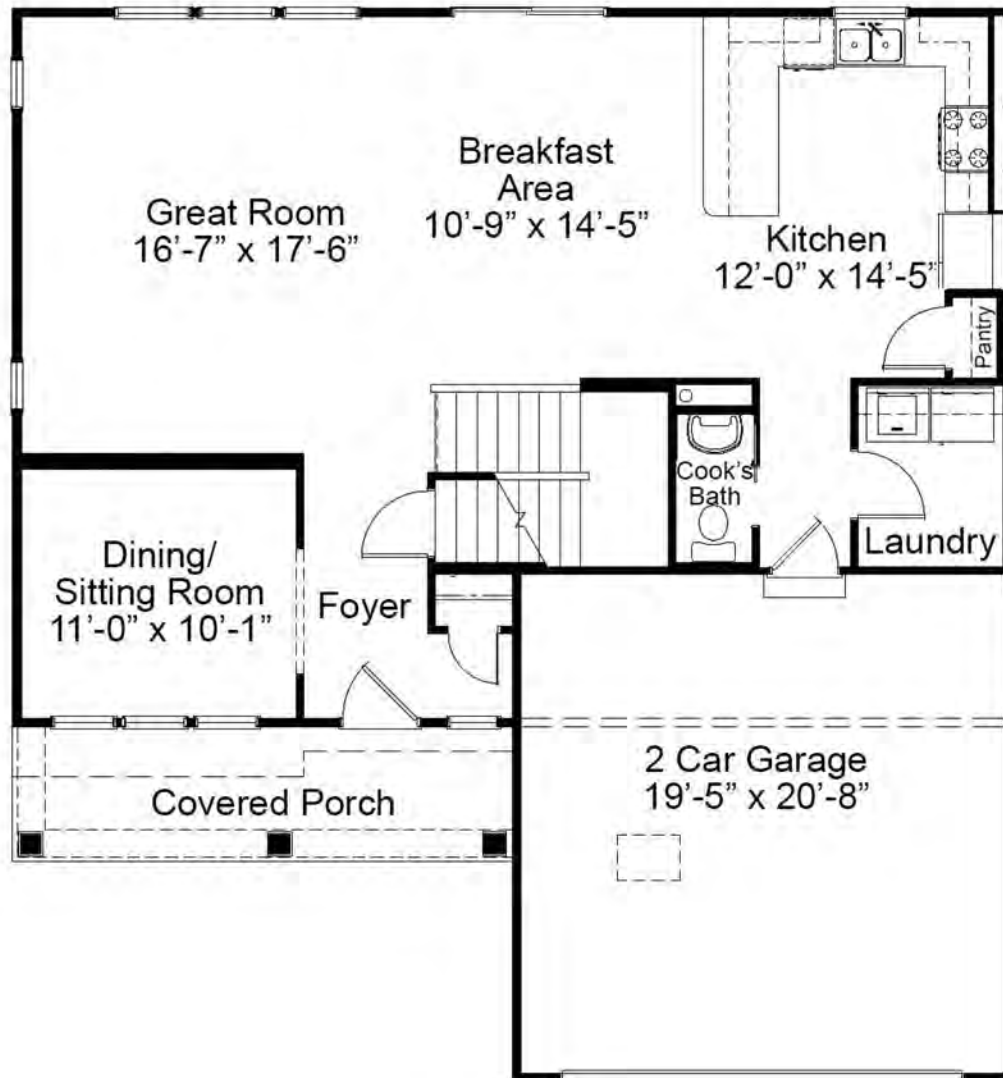
ELEVATION VI



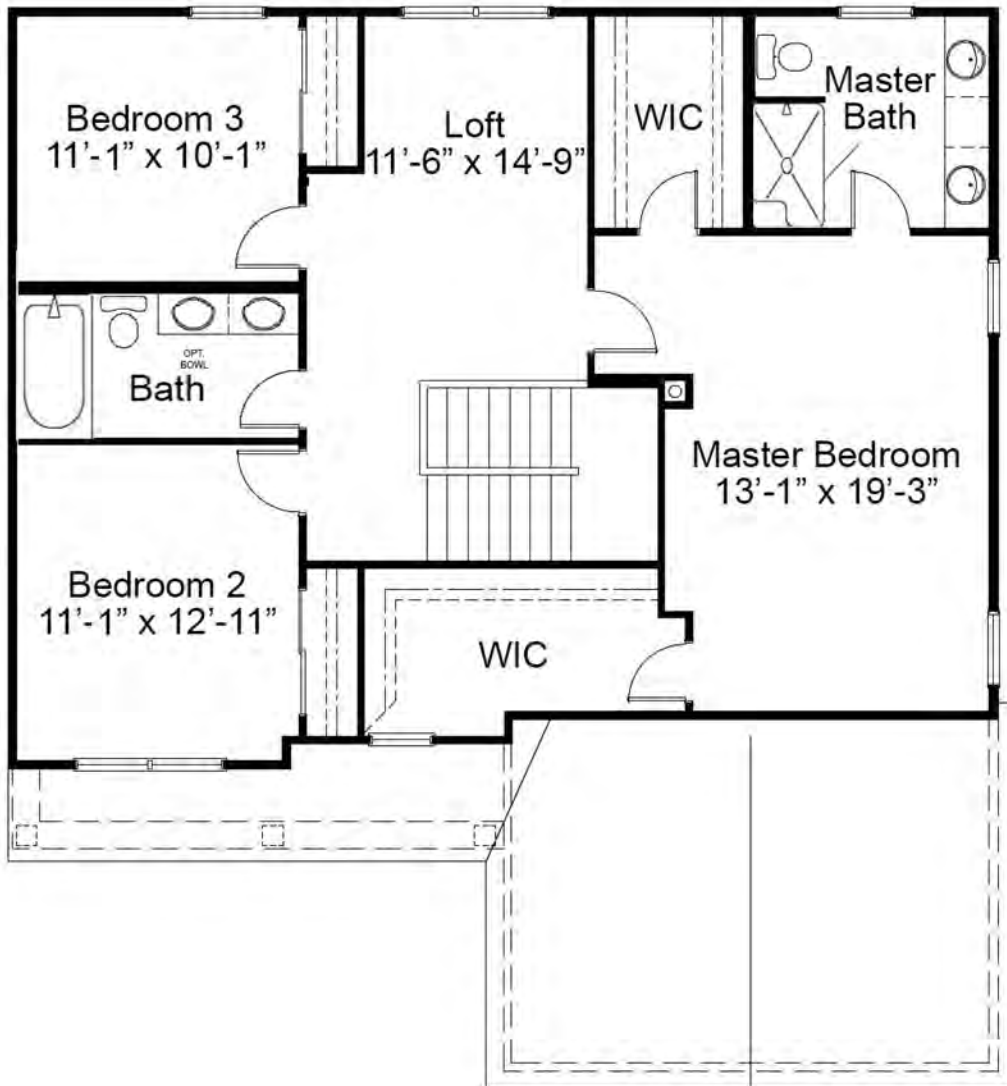


The Winslow 2 Story Floor Plan

FIRST FLOOR PLAN

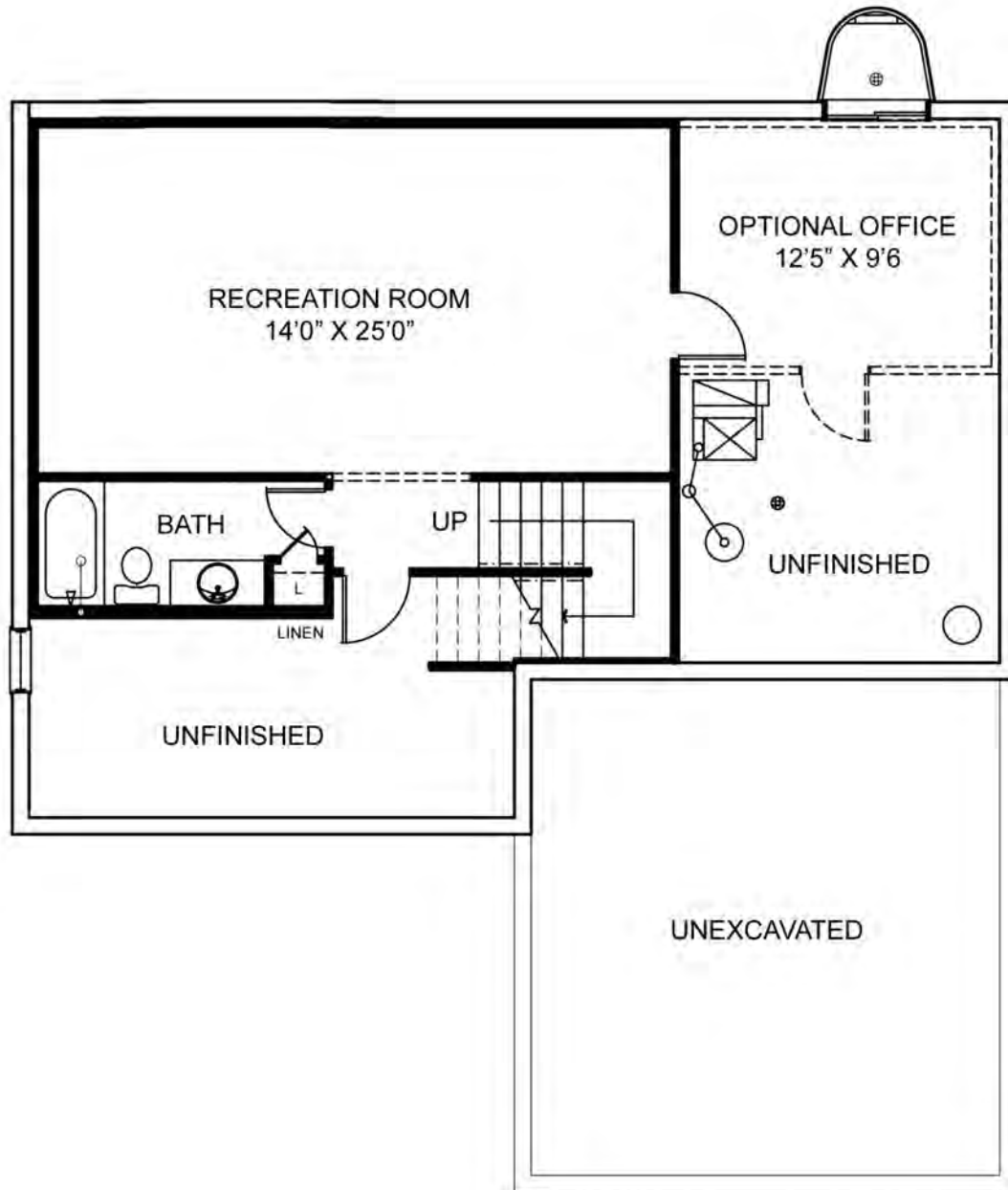


SECOND FLOOR WITH LOFT



The Winslow 2 Story Floor Plan

OPTIONAL FINISHED LOWER LEVEL



695 Trade Center Boulevard | Chesterfield | MO | 63005 | FandFHomes.com



Fischer & Frichtel Custom Homes has a policy of continuous improvements of products and reserves the right to make improvements or changes on products and prices without notice. Homes built in this community are built in accordance with the standard features of this community and may differ from similar plans offered in other Fischer & Frichtel developments. Floor plans and exterior designs may show options not included in the base price. All square footages are approximate and may vary from actual plan dimensions.

